

SUSTAINING LIVERPOOL

WINTER 2021



Sugar Gliders can glide through the air for more than 50 metres using the membranes between their limbs.



In this issue

Blitz against environmental crime

Liverpool residents are going solar

What's new in waste

Get involved and Dates for your diary

LIVERPOOL
CITY
COUNCIL





MESSAGE FROM THE MAYOR

Welcome to the Winter edition of Sustaining Liverpool.

It is never too late to help protect and maintain our natural environment. In this edition, find out how to help reduce the use of plastics, reuse and recycle furniture and enhance our natural environment by participating in fun, informative and free workshops on offer on page 5.

In the last issue we featured a story about Council’s successful trial of sugar for weed management. The innovative trial was discussed in more detail in an ABC Radio interview, if you missed it you can read about it [here](#).

Another way you can help protect our environment is by volunteering at one of our tree planting days, see page 11 for more details. No experience is required, all tools and training are provided onsite.

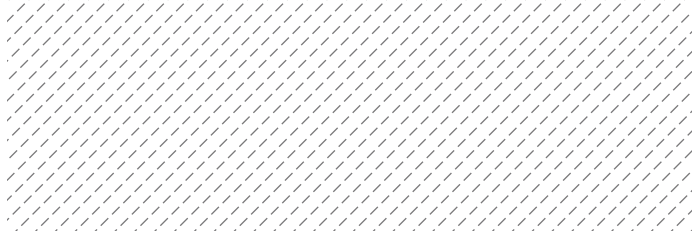
Our environment volunteers work tirelessly on projects that help improve our city and on page 10 of this issue we profile Maree Stacy who has been an environment volunteer with Council for 17 years. Thank you Maree and all our volunteers, for your continued service.

Until next time, take care of yourself and please take care of our environment.

Mayor Wendy Waller
Liverpool City Council

IN THIS ISSUE

- Tackling plastic pollution at the source 3
- Wildlife at twilight at Lt Cantello Reserve 3
- Get involved 4
- Events 5
- Liverpool residents are going solar 6
- Blitz against environmental crime 8
- Aquatic plants for attracting wildlife..... 8
- What’s new in waste 9
- Environment volunteer profile 10
- What’s On 11
- Dates for your Diary 12



RECEIVE YOUR NEWSLETTER VIA EMAIL. 

Due to the impact of COVID-19 and to reduce our carbon footprint the Sustaining Liverpool newsletter will be delivered in digital format. To receive the latest Sustaining Liverpool e-newsletter send us an [email](#).



Customer Service Centre Ground Floor, 33 Moore Street, Liverpool NSW 2170
All correspondence to Locked Bag 7064 Liverpool BC NSW 1871
Call Centre 1300 36 2170 Email lcc@liverpool.nsw.gov.au
Web www.liverpool.nsw.gov.au NRS 13 36 77 ABN 84 181 182 471

TACKLING PLASTIC POLLUTION AT THE SOURCE



Photo courtesy of Conservation Volunteers Australia

By Mary Erian and Teresa Gustowski

As part of the #SeatoSource project, Conservation Volunteers Australia hosted a community clean up at Heron Park in the Chipping Norton Lakes Precinct. 15 enthusiastic volunteers came along to assist with the clean-up where they removed 98 kilograms of litter.

The team also conducted a survey of the litter collected. Out of 1063 pieces of litter, a whopping 985 items (93%) were made of plastic.

The #SeatoSource project aims to identify sources of litter and remove them before they reach the ocean.



WILDLIFE AT TWILIGHT AT LT CANTELLO RESERVE

By Xuela Sledge and Mary Erian

Liverpool City Council and Greater Sydney Landcare Network hosted spotlighting wildlife walks over two nights in March at Lieutenant Cantello Reserve, Hammondville.

The spotlighting event was held to inform the community about the importance of habitat remnants in our parks and reserves.

The walks were led by ecologist Chad Beranek, who helped attendees spot native nocturnal wildlife living in the reserve, including ring-tailed possums, frogs, microbats and a tawny frogmouth.

Although the reserve is relatively small, it hosts a large number of plants and animals due to the presence of old

growth trees. These trees are at least 50 years old and usually have hollows, which are crucial for the breeding and survival of animals such as possums, gliders, bats and many bird species.

The highlight of the walk was finding a family of sugar gliders (pictured) living in the oldest tree onsite. The sugar gliders ran up and down the tree and flew around the canopy, staying close to the mother tree. It seemed the family, who had made their home in the large, hollow bearing Blue Box (*Eucalyptus baueriana*), had birthed a healthy litter.

Lt Cantello Reserve is part of a Saving our Species project coordinated by Greater Sydney Landcare Network and the NSW National Parks and Wildlife Service.



Tawny Frogmouth
(*Podargus strigoides*)



Sugar Glider
(*Petaurus breviceps*)

GET *Involved*

Chemical CleanOut



If you need to dispose of hazardous household chemicals, please do it safely by dropping them off at our next **Chemical CleanOut** event on:

Sunday 18 July
9am – 3.30pm

Liverpool City Council Operations Centre,
99 Rose Street, Liverpool
www.cleanout.com.au

You can drop off for free:



Only household quantities accepted (20L or 20kg), except paint. Up to 100L (in 20L containers) of paint accepted.



SAFE CAT, SAFE WILDLIFE



Around 46 per cent of Australia's endangered wildlife can be found in towns and cities. By keeping cats safe at home, you're protecting them from harm and helping our precious native wildlife flourish.

Visit the [Safe Cat website](#) for advice, tips, and tools to help you transition your cat to a safer and happier life at home. Become part of the community that loves their cat and local wildlife.

FREE NATURE ACTIVITIES *for kids*

Looking for fun and educational activities to keep the kids entertained and learning?



Junior Landcare minds

Get [free online activity sheets](#) to help children explore food production, biodiversity, waste management and Indigenous perspectives at home and at school.

Planet Ark activity pack

Learn more about how planting trees protects our environment with this [fun activity pack](#) with games and puzzles that kids will enjoy.

SUSTAINABILITY BOOK COLLECTION



Want to find out how to live more sustainably? How can you reduce your ecological footprint?

Take some time to [browse our non-fiction collection](#) at all Liverpool City Library branches or digital collection via [BorrowBox](#), and find plenty of ideas for how you can reduce, reuse and recycle.

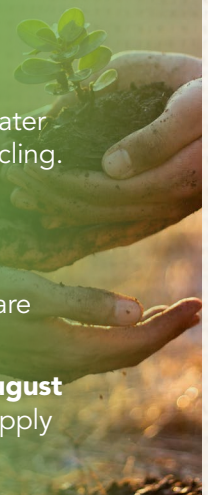
SUSTAINABLE ENVIRONMENT GRANTS

The Sustainable Environment Grants program helps schools and community groups to reduce their impact on the environment and implement environmentally sustainable actions.

Key funding priorities fall under the categories of natural environment, sustainable gardening, sustainable water use and waste minimisation and recycling.

Up to \$5000 in funding is available. Applicants that demonstrate a commitment to their project through either financial or volunteer support are considered favourably.

Applications open 13 July to 20 August 2021. For more information and to apply for a grant, visit the [Council website](#).



FREE Sustainability Workshops

Bookings are required. To book email your name, suburb, number of people attending and name of this workshop to erp@liverpool.nsw.gov.au



Online

FURNITURE REPAIR WEBINAR

Saturday 19 June
11am – 12pm

Do you have damaged or broken furniture? Don't throw it away!

Join woodworkers from the Bower Reuse & Repair Centre and learn the skills to tackle simple projects at home such as disassembling and re-gluing wobbly chairs and repairing stains, scratches and dents in furniture surfaces.



SOAP MAKING*

Saturday 24 July
10am – 12pm

Location: Liverpool

(exact location confirmed on booking)

Making your own soap is easy, fun and better for the environment.

Learn how to make your own soap that you can take home at this hands-on workshop and help reduce the use of plastic packaging.



BACKYARD BIODIVERSITY*

Sunday 15 August
10am-11am

Location: Greenway Park

(exact location confirmed on booking)

Create a haven for wildlife in your backyard.

Join our presenter from the *Habitat Network* and find out what species you can plant to make an attractive haven for native wildlife in your backyard. Participants will be given FREE native plants to get started right away.

*Please be advised that events may be cancelled due to COVID-19 restrictions. Registered participants will be notified of any changes.

COMMUNITY TREE PLANTING

LAKE FRANCIS

Sunday 13 June | 9am – 11.30am

Meet near the outdoor gym at Greenway Oval car park, West Hoxton

MIHAJLOVIC RESERVE

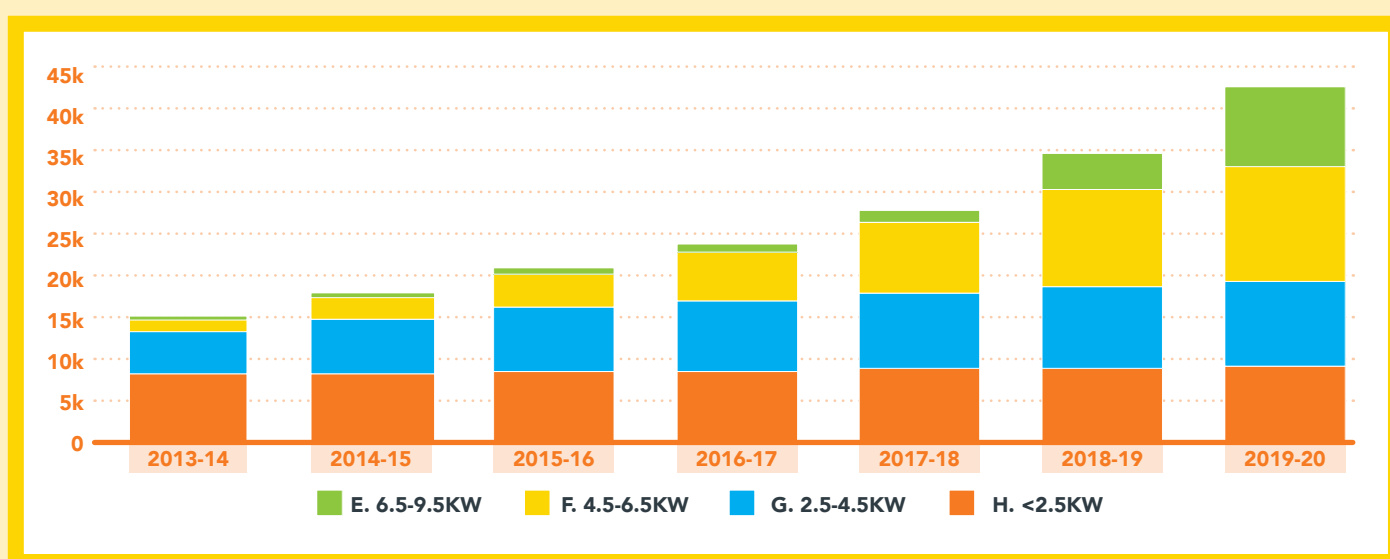
Sunday 18 July | 9am – 11.30am

Meet in the car park at the end of Cedar Road, Casula

No experience is necessary. Council provides all tools and plants. Make sure you have closed-in shoes, a hat, gloves and water bottle.

LIVERPOOL RESIDENTS ARE GOING SOLAR!

More Australians, including Liverpool residents, are embracing the benefits of solar energy than ever before. The uptake of solar across Liverpool has tripled in the last five years, with the majority of Liverpool residents selecting 4.5kW-6.5kW solar systems to meet their energy needs.



Graph showing the uptake of solar PV systems across Liverpool

SOLAR PV ENERGY FOR YOUR HOME

In considering solar energy for your home, choose a solar PV system that:

- Fills your available roof area;
- Meets your electricity needs; and
- Meets your budget.

The size of your solar system relates to the amount of energy your household uses per day.

A typical Australian household uses 15-20kWh per day, while a two person household will use approximately 8kWh on average per day.

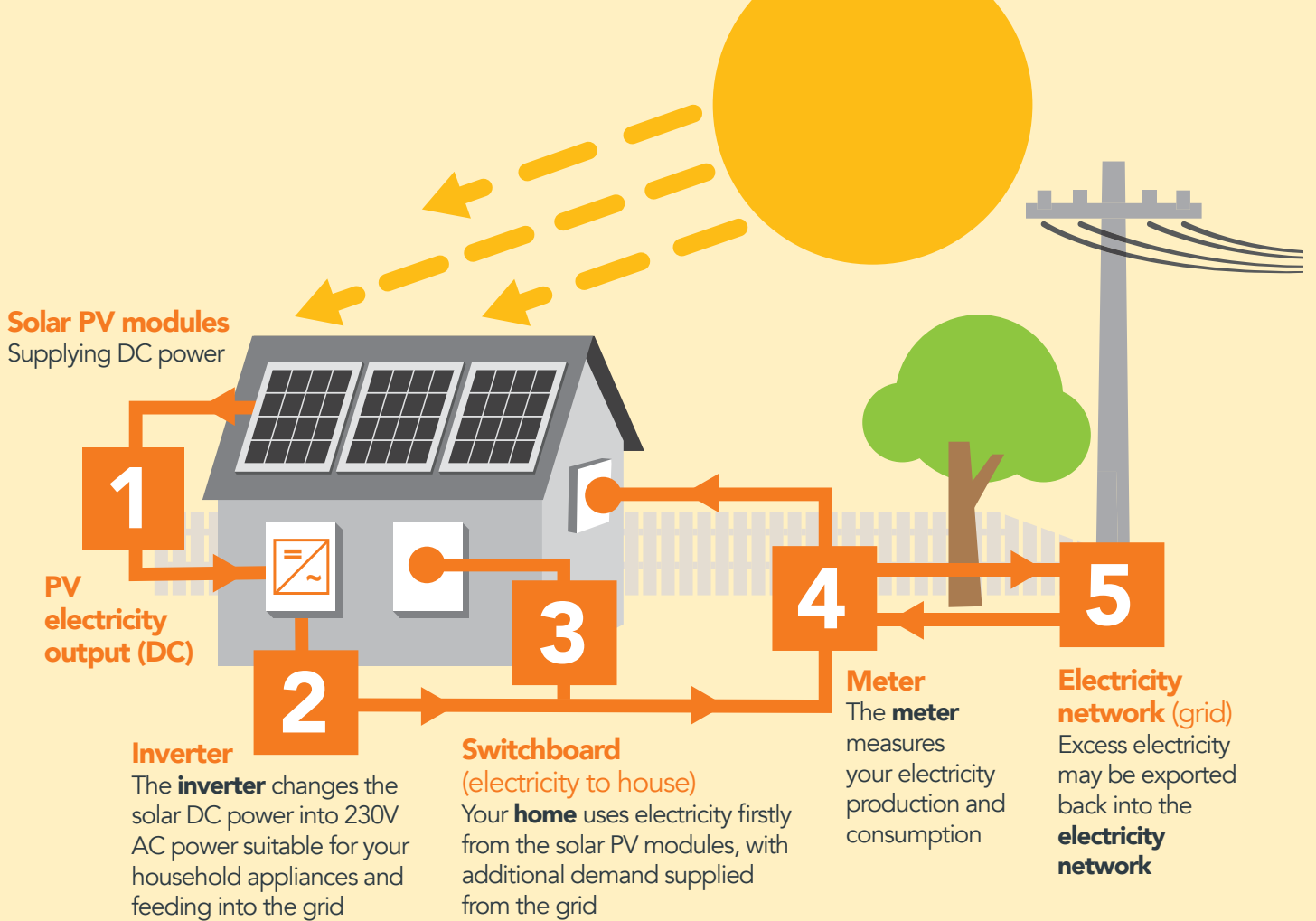
For each kW of solar panels, you can expect to get 4kW of electricity produced. So, if your daily household usage is 20kWh (daily average)/4kWh = 5, then you'll generally need a 5kW solar system.

CHOOSING AN ACCREDITED SOLAR INSTALLER/COMPANY

LOOK FOR:

- Clean Energy Council Accreditation for Design and Installation of Grid Connected PV Systems
- Examples of past work and referees you can contact
- Evidence of best practice work and involvement in the industry
- Insist on at least 10-year manufacturer's warranty (also called product warranty)
- Be aware there is a different guarantee to the 25 or 30 year 'performance warranty'
- Look over the solar panel specifications

Click [here](#) to see if a specific solar installer is accredited.



HOW MUCH DO SOLAR PANELS COST IN NSW?

The price you pay for your solar PV system is determined by the system size and the subsidy you receive under the Australian government run solar rebate scheme. For example, the typical cost of a 6.6kW solar system is \$9,500, the government rebate is approximately \$3460, so the cost you pay is \$6040 for a 6.6kW solar system.

SOLAR REBATES

Solar rebate incentives in the form of Federal government Small-scale Technology Certificates (STCs) help reduce the upfront cost of installing your solar system.

The government calls it the 'STC scheme', but most people know it as the 'Solar Rebate' scheme. Such financial incentives like small-scale technology certificates (STCs) will help reduce the upfront cost of your solar system, however it's important to verify it is built into your retail price. Find out more [here](#).

You can discover the maximum solar rebate you are entitled to with this [STC calculator](#).

DO YOUR RESEARCH!



The following key links provide information on what to look out for when installing solar PV systems:

- [NSW Government solar energy saver program](#)
- [NSW Fair Trading's solar installation checklist](#)
- [Clean Energy Council's Consumer Guide to Buying Household Solar Panels](#)
- [Clean Energy Council's Guide to Installing Solar PV for Business and Industry](#)
- [YourHome - solar PV for households](#)

BLITZ AGAINST ENVIRONMENTAL CRIME

CRIME STOPPERS
.com.au
1800 333 000

The online sale of prohibited aquatic weeds is of serious concern for Council and the community.

Crime Stoppers is collaborating with Local Land Services, NSW Department of Primary Industries and local councils on a joint campaign to address the illegal trade of certain prohibited plants, which are catastrophic to our waterways.

Aquatic weeds like *Water Hyacinth*, *Frogbit* and *Salvinia* are devastating to our environment and illegal to trade as a result.

These plants grow at a rapid rate, blocking waterways and reducing water quality.

They restrict the access of livestock, birds and other native animals to water, reduce food and shelter for fish and native animals and prevent native water plants from growing. They also impact the community and economy, preventing boating, fishing and swimming and cost hundreds of thousands of dollars to control each year.

The online marketplace, including platforms such as Facebook and Gumtree, have become an emerging pathway for the prohibited trade of plants, and a biosecurity challenge.

The sale of these plants is regulated by the Biosecurity Act 2015. If you sell any plant, you have a General Biosecurity Duty, including knowing the name of the plant that you are selling and any restrictions.

There are penalties of up to \$1.1 million or 3 years imprisonment for individuals found selling these plants.

Council has received regular reports of online sales for investigation, and we are appealing to the public for help by reporting any concerns to Council or Crime Stoppers.

If you see, know or suspect environmental criminal activity, contact Crime Stoppers in complete confidence on 1800 333 000 or [report online](#).



For more information about the three targeted weed species [click here](#).

AQUATIC PLANTS FOR ATTRACTING WILDLIFE

Plants are an essential component for water habitats like ponds, as they attract more species and can be a critical source of water and shelter, promoting biodiversity.

A variety of locally native plants is best, however, it is important to do your research and consider the water depth, sunlight and temperature requirements of individual species so you can select the species for your best suited pond or waterbody.

Free-floating plants sit on the surface with hanging roots e.g. Azolla and Duckweed (*Wolffia australiana*).

Deep-water plants have leaves that typically float on the water surface with roots growing in the soil below e.g. Ottelia (*Ottelia ovalifolia*), Nardoo (*Marsilea mutica*) and Running Marsh Flower (*Ornduffia reniformis*).

Submerged plants grow partly or completely underwater e.g. Water Ribbons (*Cycnogeton procerum*) and Eel Grass (*Vallisneria australis*).

Marginal/Bog plants are the most important as they attract insects and birds, and are best suited for small ponds e.g. *Brachyscome paludicola* and *Myriophyllum crispatum*.

Visit [Birds in Backyards](#) for more details on how to set up your pond and select the most appropriate native plants for attracting wildlife.

NEW

BINS

Most of our residents have now received their new bins. It is important that we remember what each bin is used for.



GARBAGE BIN



WHAT NOT TO PUT IN THIS BIN

- Car and household batteries**
- Paint and chemicals**
- Building materials
- Motor oils and fuels**
- Syringes and medical waste*
- Gas bottles**



RECYCLING BIN



WHAT NOT TO PUT IN THIS BIN

- Plastic bags, soft and hard plastics
- Syringes and medical waste*
- Foam including meat trays
- Broken glass and crockery
- Food waste
- Paint and chemicals**
- Textiles and clothing



GREEN WASTE BIN



WHAT NOT TO PUT IN THIS BIN

- Stumps and logs
- Paint and chemicals**
- Foam including meat trays
- Household rubbish
- Soil, dirt and rocks
- Syringes and medical waste*
- Plastic bags and soft plastics
- Broken glass and crockery

For more information about disposing of items check out our **A to Z of Waste** on Council's [website](#).

* Please visit Council's website for more information on the Be Sharpe Program. ** Drop off these items at the Community Recycling Centre. Visit Council's website for more details.

NEW ONLINE BOOKING SYSTEM



Council now has a new online booking system for your household clean-up service.

The free household clean-up service helps residents to dispose of larger household waste items. Residents can book up to two free general waste and two free mattress collections per year. Metal collections are unlimited. See [here](#) for more information.

Book Online

www.liverpool.nsw.gov.au/householdcleanup

Call

1300 36 2170
Mon – Fri | 8.30am – 5pm

WHAT HAPPENS TO YOUR CLEAN-UP MATERIALS?



The general waste material is taken to Bingo's Eastern Creek Facility where the material is sorted and, where possible, recovered for recycling. The remaining waste is compacted and disposed of in landfill.

Metal collection is taken to Liberty Steel in Chipping Norton for recycling.

Mattresses are collected and processed by Soft Landings. The mattresses are shredded with the metal recovered. The soft parts of the mattress are recycled into items such as carpet underlay.



ENVIRONMENT VOLUNTEER *Profile*



Name:
Maree Stacy

Volunteer roles:
Coordinator of Streamwatch and Light Horse Park Environment Group

Coordinator of Light Horse Park Community Garden

Winner of Fraser Environment Award (2020 Australia Day Awards)

Coordinator & ride leader of Liverpool Bicycle User Group

How long have you been an environment volunteer with Liverpool City Council?

17 years

What do you enjoy most about volunteering?

I enjoy working to preserve and secure our remaining bush areas. We need to make sure that we provide a space for local native bush plants and animals to live and thrive.

What have been your biggest achievements?

I was very honoured to receive the Fraser Environment Award in 2020, but my greatest achievement, along with all the other volunteers over the years, has been to re-establish a small patch of native bush near the Georges River and seeing native animals and birds return to the area.

What are some challenges?

Our main challenge is the continual war with weeds! Extra hands are always welcome – they shall not pass! It does give you a great feeling of achievement when you have been able to clear out an area, ready to be mulched & re-planted.

What is your vision for Liverpool's environment?

I hope we can continue to maintain and extend bush regeneration areas across Liverpool. They are so important to link up to provide bush corridors for all native birds and animals. This is not only important for the survival of native species; I think it is also very important for the health and wellbeing of the people who live in the area as well.

Looking to do something positive for the environment?



We are always looking for Bushcare volunteers who can dedicate a couple of hours of their time each month. No experience necessary.

Signing up is easy. Contact Council's Environment Restoration Plan team on 1300 36 2170 or email erp@liverpool.nsw.gov.au to find out how you can get involved. Details of each group are on page 11.

WHAT'S ON

Join our enthusiastic volunteers who beautify our local parks and bushland by removing weeds and litter and planting native plants. Meet like-minded people, increase your knowledge of the environment and create habitat for local wildlife.

Don't have any experience? Don't worry – our qualified staff are happy to provide training. All equipment is supplied.

Collimore Park Environment Group

Meet in the Collimore Park car park on Collimore Avenue, Liverpool

Saturday 9am-11am
3 July
7 August

Amalfi Park Environment Group

Meet inside the park near the footpath on Reilly Street, Lurnea

Sunday, 9am – 11am
4 July
1 August

Clinches Pond Environment Group

Meet inside the park at the Gloria Taylor Reserve sign on Swain Street, Moorebank

Saturday, 9am – 11am
12 June
10 July
14 August

Weaving Garden Environment Group

Meet at the seats inside the reserve at the end of Casula Road, Casula

Saturday, 12pm – 2pm
12 June
10 July
14 August

Cessna Reserve Environment Group

Meet in the reserve at the intersection of Hemsworth Avenue and Stanley Avenue, Middleton Grange

Sunday, 9am – 11am
13 June
11 July
8 August

Chauvel Park Environment Group

Meet at the park entrance at the end of Sammut Crescent, Chipping Norton

Saturday, 9am – 11am
19 June
17 July
21 August

Tucker Road Environment Group

Meet at the playground. Entry via the path off the crossing on Kendall Drive, Casula

Sunday, 2pm – 4pm
20 June
18 July
15 August

Streamwatch

Come along to investigate the water quality of the Georges River. Meet in the Light Horse Park car park, Riverpark Drive, Liverpool

Saturday, 8am – 9am
26 June
31 July
28 August

Light Horse Park Environment Group

Meet in the Light Horse Park car park, Riverpark Drive, Liverpool

Saturday, 9am – 11am
26 June
31 July
28 August

Voyager Point Environment Group

Meet in the car park at Voyager Park on Orlando Crescent, Voyager Point

Sunday, 9am – 11am
27 June
25 July
29 August

Streamwatch

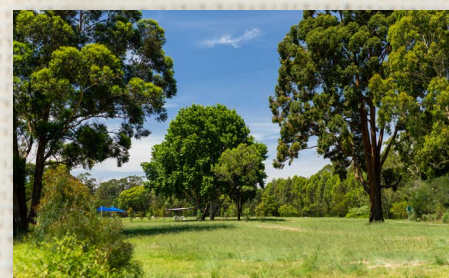
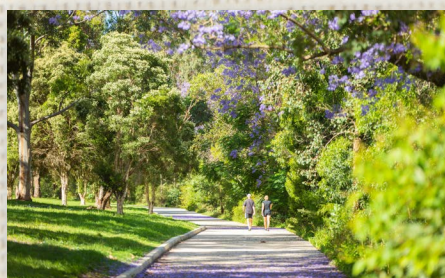
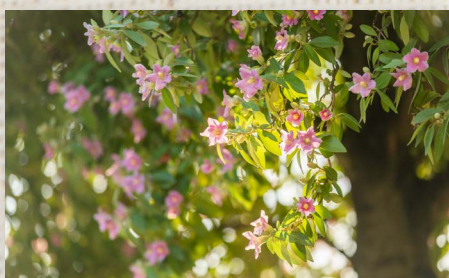
Come along to investigate the water quality of Cabramatta Creek. Meet in the Ireland Park car park on Memorial Avenue, Liverpool

Sunday, 12pm – 1pm
27 June
25 July
29 August

Elouera Bushland Reserve Environment Group

Meet in the Ireland Park car park, Memorial Avenue, Liverpool

Sunday, 1pm – 3pm
27 June
25 July
29 August



For more information, phone 1300 36 2170 or go to our [website](#).

PLASTIC FREE JULY

1 – 31 JULY



A global movement that helps millions of people be part of the solution to plastic pollution – so we can have cleaner streets, oceans and beautiful communities. Visit the [website](#) to discover solutions and ideas, join the challenge and refuse single use plastic.

NAIDOC WEEK

4 – 11 JULY



The NAIDOC 2021 theme – Heal Country! – invites the nation to embrace First Nations’ cultural knowledge and understanding of Country as part of Australia’s national heritage, and equally respect the culture and values of Aboriginal peoples and Torres Strait Islanders. Learn more [here](#).

NATIONAL TREE DAY

1 AUGUST



National Tree Day is Australia’s largest community tree planting event. It is an opportunity for everyone to put their hands into the earth and give back to the community. Visit [here](#) to get involved.

NATIONAL TREE DAY STORYTIME

26 – 30 JULY
Various library branches

Listen to a story celebrating nature and take home a native seedling to plant on National Tree Day. Capacity is limited and parents are asked to collect a ticket 30 minutes prior to the event. Click [here](#) for more details.

NATIONAL STUDENT VOLUNTEER WEEK

10 – 16 AUGUST

A week of events, activities, and campaigns that promote student volunteering led by higher education providers and schools across Australia. Follow the conversation at #NSVW21 or visit the [website](#) to find out how you can get involved.

NATIONAL SCIENCE WEEK

14 – 22 AUGUST



Australia’s annual celebration of science and technology. Use the official app to find out how to get involved or follow the conversation at #scienceweek. For more details, visit the official [website](#).

SCIENCE WEEK STORYTIME

16 – 20 AUGUST
Various library branches

Join us for bat-themed storytime to celebrate National Science Week at Liverpool City Library. Capacity is limited and parents are asked to collect a ticket 30 minutes prior to the event. Click [here](#) for more details.

KEEP AUSTRALIA BEAUTIFUL WEEK

17 – 23 AUGUST



This week aims to raise awareness about the simple things we can do to reduce our impact on the environment and encourage positive action. Click [here](#) to learn more.

LOVE LIVERPOOL

NAIDOC Week
4-11 July 2021

To mark this special week in our City’s calendar, Liverpool City Council will be hosting a free Family Fun Day in Miller featuring live performances, giveaways and workshops including arts and crafts. This is a non-ticketed event. For more information on this event and other NAIDOC Week events see [here](#).