

- Legend**
- Partial flood affectation in the new study
  - Completely relieved from flooding in the new study
  - Partially increased flood affectation in the new study
  - Flood affectation in both studies
  - Partially relieved flood affectation in the new study
  - Cadastre

**ATTACHMENT A**

**KEMPS CREEK**

**1% AEP PROPERTY AFFECTATION - COMPARISON TO 2004 PLAN**

While every care is taken to ensure the accuracy of this data, the Liverpool City Council and the copyright owners, in permitting the use of this data, make no representations or warranties about its accuracy, reliability, completeness or suitability for any particular purpose and disclaims all responsibility and all liability (including without limitation, liability in negligence) for all expenses, losses, damages (including indirect or consequential damage) and costs which you might incur as a result of the data being inaccurate or incomplete in any way and for any reason.

**LIVERPOOL CITY COUNCIL**

**THE GREAT SOUTH WEST**

0

345

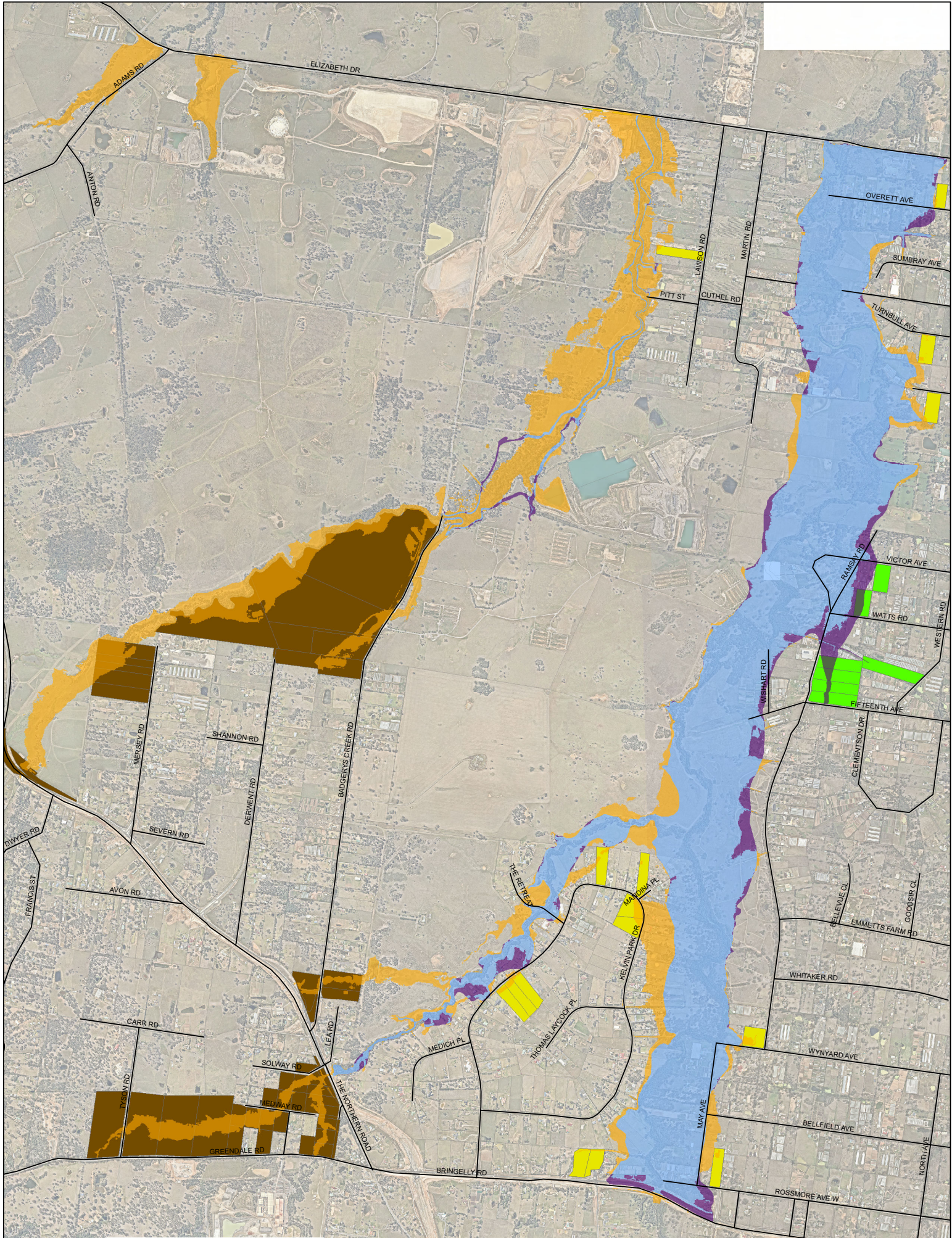
690

1,380

Metres

Date: 09/07/2020





- Legend**
- Not mapped previously
  - Partial flood affectation in the new study
  - Completely relieved from flooding in the new study
  - Partially increased flood affectation in the new study
  - Flood affectation in both studies
  - Partially relieved flood affectation in the new study
  - Cadastre

### ATTACHMENT A

#### WIANAMATTA SOUTH CREEK

#### 1% AEP PROPERTY AFFECTATION - COMPARISON TO 2004 PLAN

While every care is taken to ensure the accuracy of this data, the Liverpool City Council and the copyright owners, in permitting the use of this data, make no representations or warranties about its accuracy, reliability, completeness or suitability for any particular purpose and disclaims all responsibility and all liability (including without limitation, liability in negligence) for all expenses, losses, damages (including indirect or consequential damage) and costs which you might incur as a result of the data being inaccurate or incomplete in any way and for any reason.



**LIVERPOOL CITY COUNCIL**



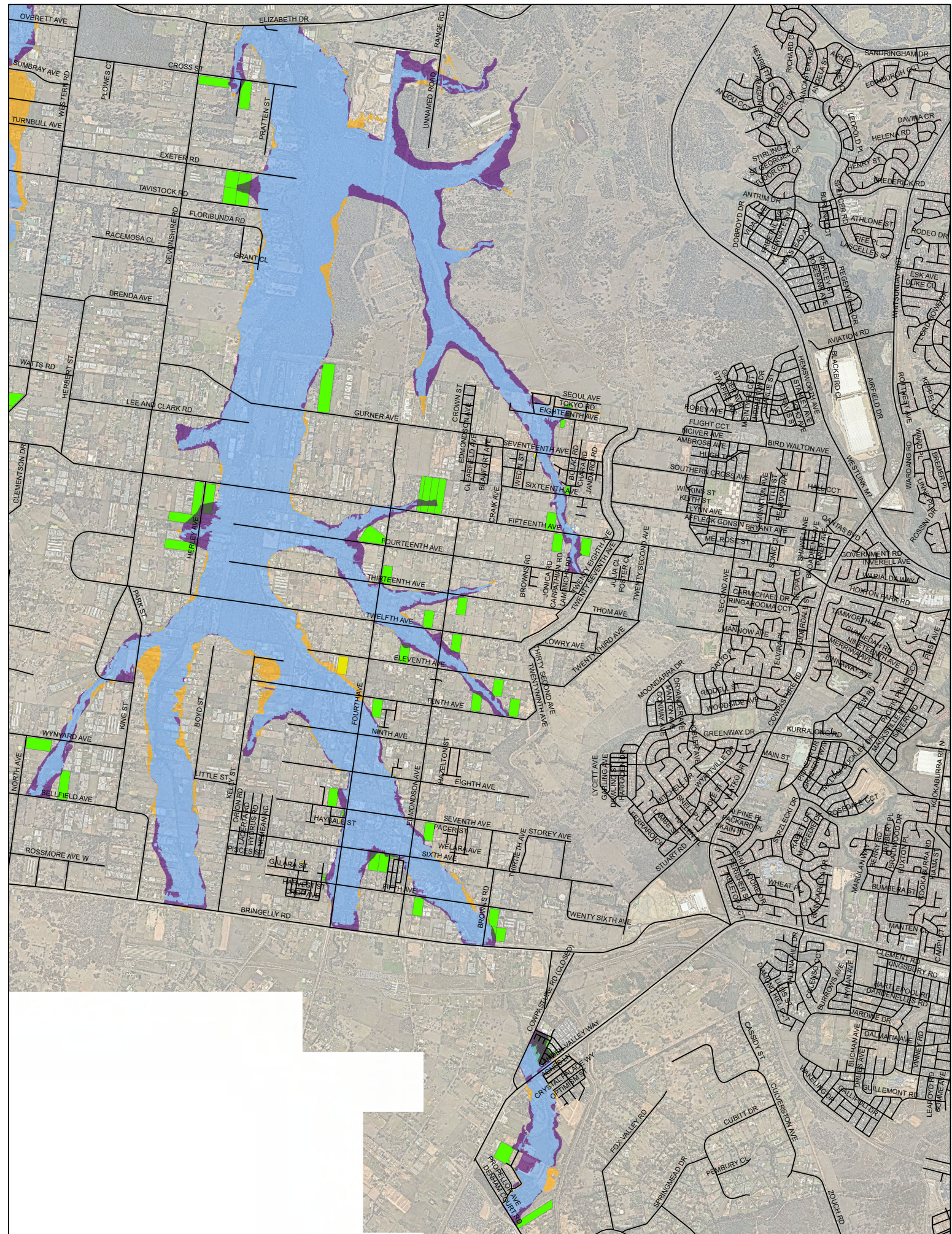
**THE GREAT SOUTH WEST**




0 285 570 1,140  
Metres

Date: 09/07/2020





- Legend**
- Partial flood affectation in the new study
  - Completely relieved from flooding in the new study
  - Partially increased flood affectation in the new study
  - Flood affectation in both studies
  - Partially relieved flood affectation in the new study
  - Cadastre

**ATTACHMENT B**

**KEMPS CREEK  
PMF PROPERTY AFFECTATION - COMPARISON TO 2004 PLAN**

While every care is taken to ensure the accuracy of this data, the Liverpool City Council and the copyright owners, in permitting the use of this data, make no representations or warranties about its accuracy, reliability, completeness or suitability for any particular purpose and disclaims all responsibility and all liability (including without limitation, liability in negligence) for all expenses, losses, damages (including indirect or consequential damage) and costs which you might incur as a result of the data being inaccurate or incomplete in any way and for any reason.



**LIVERPOOL CITY COUNCIL**



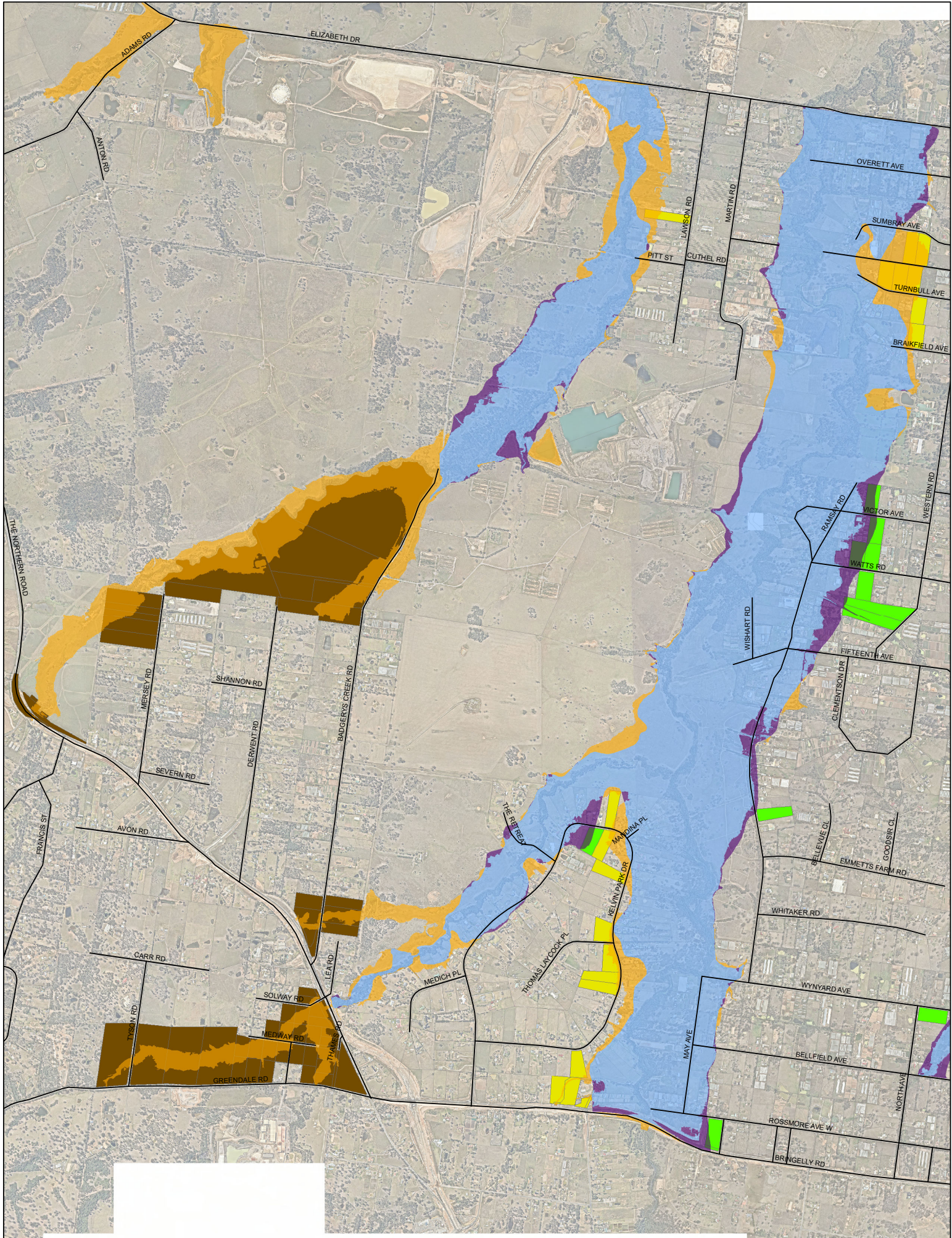
**THE LIVERPOOL SOCIAL WEST**




0 345 690 1,380  
Metres

Date: 09/07/2020





- Legend**
- Not mapped previously
  - Partial flood affectation in the new study
  - Completely relieved from flooding in the new study
  - Partially increased flood affectation in the new study
  - Flood affectation in both studies
  - Partially relieved flood affectation in the new study
  - Cadastral

**ATTACHMENT B**  
**WIANAMATTA SOUTH CREEK**  
**PMF PROPERTY AFFECTATION - COMPARISON TO 2004 PLAN**

While every care is taken to ensure the accuracy of this data, the Liverpool City Council and the copyright owners, in permitting the use of this data, make no representations or warranties about its accuracy, reliability, completeness or suitability for any particular purpose and disclaims all responsibility and all liability (including without limitation, liability in negligence) for all expenses, losses, damages (including indirect or consequential damages) and costs which you might incur as a result of the data being inaccurate or incomplete in any way and for any reason.



**LIVERPOOL CITY COUNCIL**



**THE GREAT SOUTH WEST**



0 295 590 1,180  
Metres

Date: 09/07/2020